

SSI “Stealth Underpanel”

Installation Instructions

1. Professional installation is recommended, however if proper precautions are taken, a qualified person can easily install the panel on their own vehicle.
2. Kit Contains
 - a. 1-Underpanel
 - b. 2-Large fender liner braces
 - c. 2- Small fender liner braces
 - d. 7-Philips head screws (includes 1 extra)
 - e. 15-hex head screws (includes 1 extra)
 - f. 18-U-nuts (includes 1 extra)
3. Tools needed
 - a. 7 & 8mm sockets and preferably a screwdriver type handle that accepts sockets; otherwise a small 1/4” ratchet.
 - b. Philips screwdriver
 - c. Drill with 1/8” bit
 - d. Hydraulic jack and two jack stands
4. Underpanel Installation
 - a. Park the car on solid level pavement or concrete, put in park or in first gear, secure the parking brake and chock the rear wheels.
 - b. Using the hydraulic jack, lift the front of the car up evenly on each side placing proper jack stands securely under the frame rails of the body.
 - c. Now remove the old underpanel and pork chops. Most of the time there will not be an underpanel, so just remove the two triangular pieces on each end (pork chops) and any broken or damaged pieces of the three OEM components.
 - d. Clean any dirt or debris from on top of the inside of the bumper cover and remove the four OEM u-nuts.
 - e. Using two of the Philips head screws and two u-nuts, attach the new underpanel to the bottom side of the bumper cover as shown in photos 3 & 4. Attaching the panel this way will temporarily allow you to drill the proper five holes into the bumper cover for mounting of the underpanel.
 - f. With the underpanel mounted securely to the bumper cover on the ends, hold the underpanel up to the bumper and drill all five holes using the holes in the underpanel as your guide.
 - g. Because the placement of the two outer holes is so close to two of the original holes, you may notice that the drill meets no resistance when trying to drill them.
 - h. Now remove the panel and attach the u-nuts to the edges of the panel at each hole. Make sure you have the threaded part of the clip on the top of the panel as you took it off during the drilling process, and that the threads are over each hole in the panel.

- i. Now slide the panel from behind the bumper up on top of the bottom of the bumper where you drilled the holes, then pull the inner fender liners down and under the rear edges of the panel. The panel will now be lying on top of the bumpers lower lip and fender liners just below the brake ducts.
- j. Using a hex head screw position the front middle hole and clip of the panel over the corresponding hole in the bumper lip and screw the fastener most of the way in but not completely. Now do this with the other three screws on each side of the center one, then finish tightening all seven the rest of the way.
- k. Now all that is left are the two fender liner braces, but before you can mount them you will need to make sure the brake ducts have the sensors snapped in their proper holes and the brake ducts themselves are fitted into their proper locations in the bumper grill and the fender liners. If they are not, the liners will not fit onto the panel correctly and the process will become frustrating for you until they are.
- l. Holding the liner securely in its proper position, drill through the plastic over the rear hole and u-clip of the underpanel. Now use a Philips head screw to hold on the rear of the brace. Now drill the other two holes, mount, and tighten brace with two more Philips head screws.
- m. Next insert a screw in the forward end hole of a liner brace with its chamfered leading edge facing the front of the car, hold the liner in place while poking the screw through the liner plastic and into the forward hole until it begins to thread into the u-nut then stop.
- n. Remove the temporary screw, reinsert it through the liner brace, and tighten both screws.
- o. Using a third screw, insert it through the center hole of the brace through the plastic with a little pressure, and then tighten into the center u-nut.
- p. After repeating this process on the opposite side, you will be finished with the panel portion.

5. Small fender liner reinforcement installation

- a. Place head of hex-head screw installed in the end of brackets into the factory hole located on the bottom outside edge of bumper cover next to fender liner (ref: photo).
- b. Hold the bracket parallel with the fender liner and use the other hole in the bracket as a guide to drill the 1/8" hole.
- c. Place the bracket through the fog light hole and insert screws from the bottom of car, through the holes in the bumper and liner, and into the bracket's u-nuts.
- d. Before tightening the screws completely, hold the fender liner tight against the bumper and brake ducting, then tighten the screws permanently.
- e. Reattach fog lights and secure them properly, by snapping them in place.
- f. Using caution, lower the car off the jack stands and enjoy the fruits of your labor.

You have now installed, what I believe is not only the best underpanel offered for the e36, but the last one it will ever need. Like armor for your engine and steering components, the **SSI** panel can take on almost anything the road can throw at it.



1. Attach one end on bottom side of bumper

2. Attach second end



3. Press underpanel against bumper cover and drill 1/8" holes



4. Add U-Nuts, place panel on top side of bumper & Insert screws



5. Sandwich fender liners between panel & reinforcements



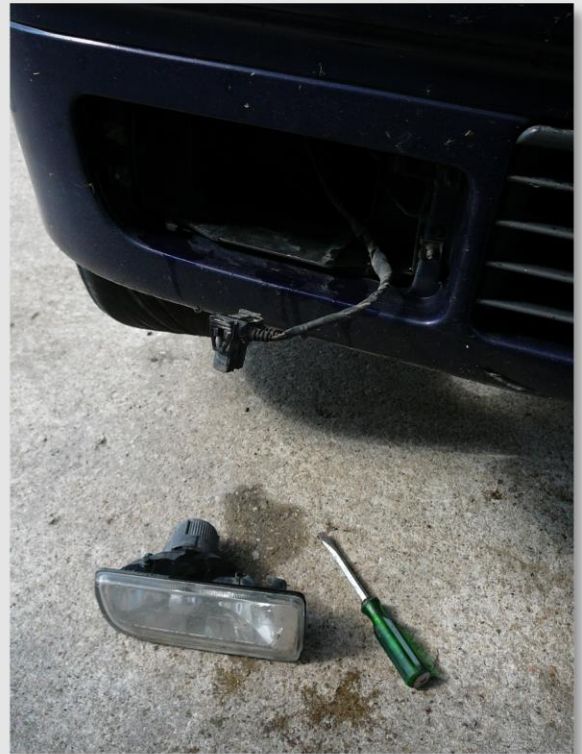
6. Panel portion will look like this when completed



1. Insert screwdriver



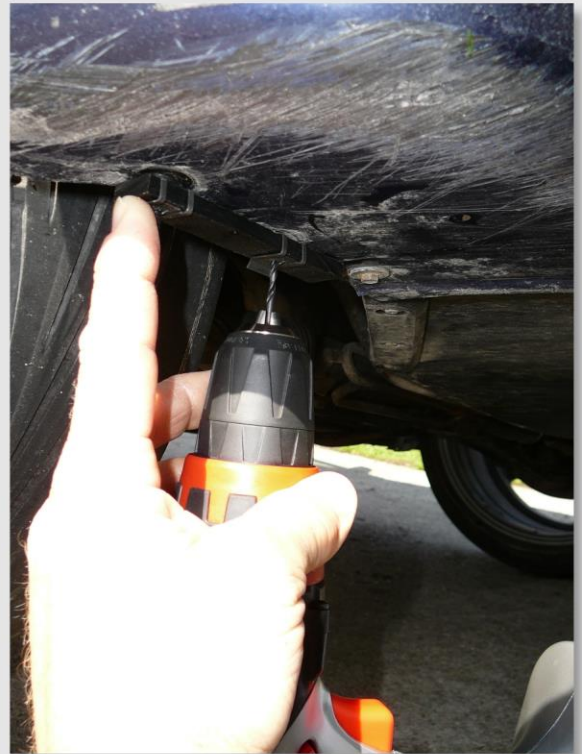
2. Pop out fog light



3. Unhook light



4. Position head of screw in hole and align parallel with fender liner



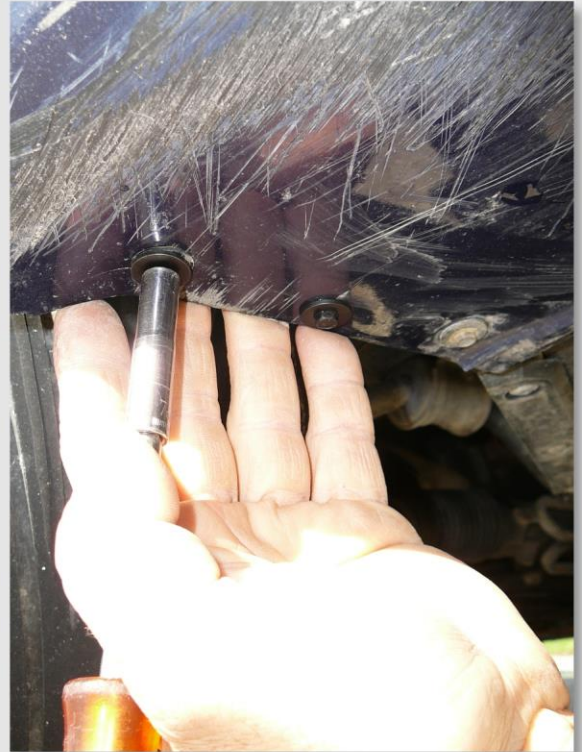
5. Eighth inch hole drilled through spring nut into bumper cover



6. Insert reinforcement into fog light hole



7. Position first screw and thread into outer spring nut



9. Hold fender liner flush against bumper cover and tighten screws



8. Thread second screw through second hole & into the other spring nut



10. Reinstall fog light and repeat on other side of car

ALL PRODUCTS AND SERVICES ARE PROVIDED, AS IS, WITHOUT WARRANTY OF ANY KIND, EITHER EXPRESS OR IMPLIED, INCLUDING, BUT NOT LIMITED TO, THE IMPLIED WARRANTIES OF MERCHANTABILITY AND FITNESS FOR A PARTICULAR PURPOSE. OUR COMPANY DOES NOT WARRANT, GUARANTEE, OR MAKE ANY REPRESENTATIONS REGARDING THE USE, OR THE RESULTS OF THE USE, OF THIS PRODUCT, SERVICES OR WRITTEN MATERIALS IN THE TERMS OF CORRECTNESS, ACCURACY, RELIABILITY, CURRENTNESS OR OTHERWISE. THE ENTIRE RISK AS TO THE RESULTS AND PERFORMANCE OF THE PRODUCTS, AND SERVICES ARE ASSUMED BY YOU. IF THE PRODUCTS, SERVICES OR MATERIALS ARE DEFECTIVE, YOU, AND NOT OUR COMPANY, ASSUME THE ENTIRE COST OF ALL NECESSARY SERVICING, REPAIR OR CORRECTION. THIS IS THE ONLY WARRANT OF ANY KIND, EITHER EXPRESS OR IMPLIED, THAT IS MADE BY OUR COMPANY. NO ORAL OR WRITTEN OR IN ANY WAY INCREASE THE SCOPE OF THIS WARRANTY AND YOU MAY NOT RELY ON SUCH INFORMATION OR ADVICE TO DO SO.